

601XL Front Bungee Replacement



Used borrowed engine hoist to lift up on the engine mount

601XL Front Bungee Replacement



Removed nose wheel fork and disconnected steering and nylon bearing

601XL Front Bungee Replacement



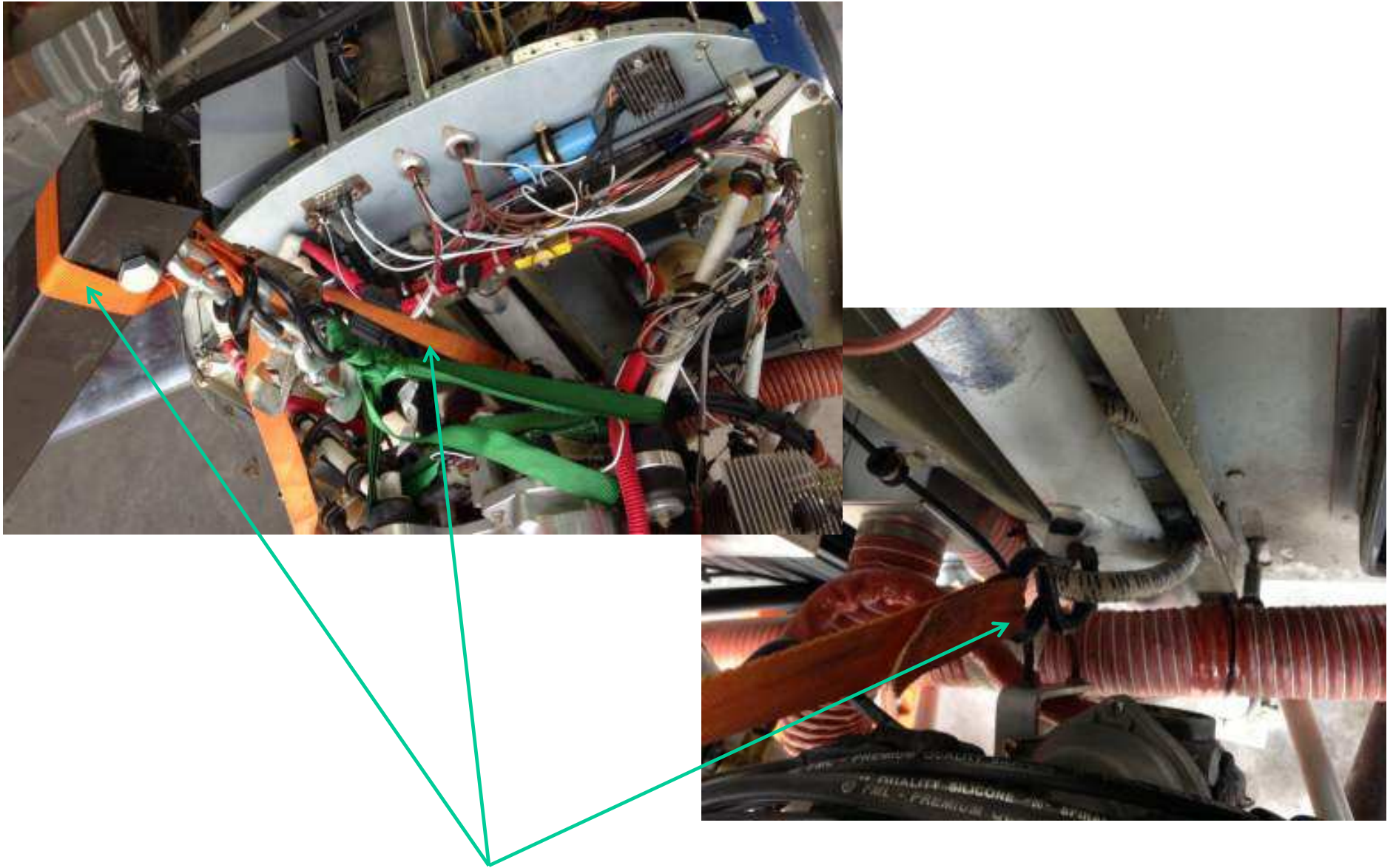
Removed gear leg cap, cut old bungee and pulled out entire gear leg.

601XL Front Bungee Replacement



Ran new bungee into gear channel, then re-installed gear leg,
hooking the bungee to the rear support tube

601XL Front Bungee Replacement



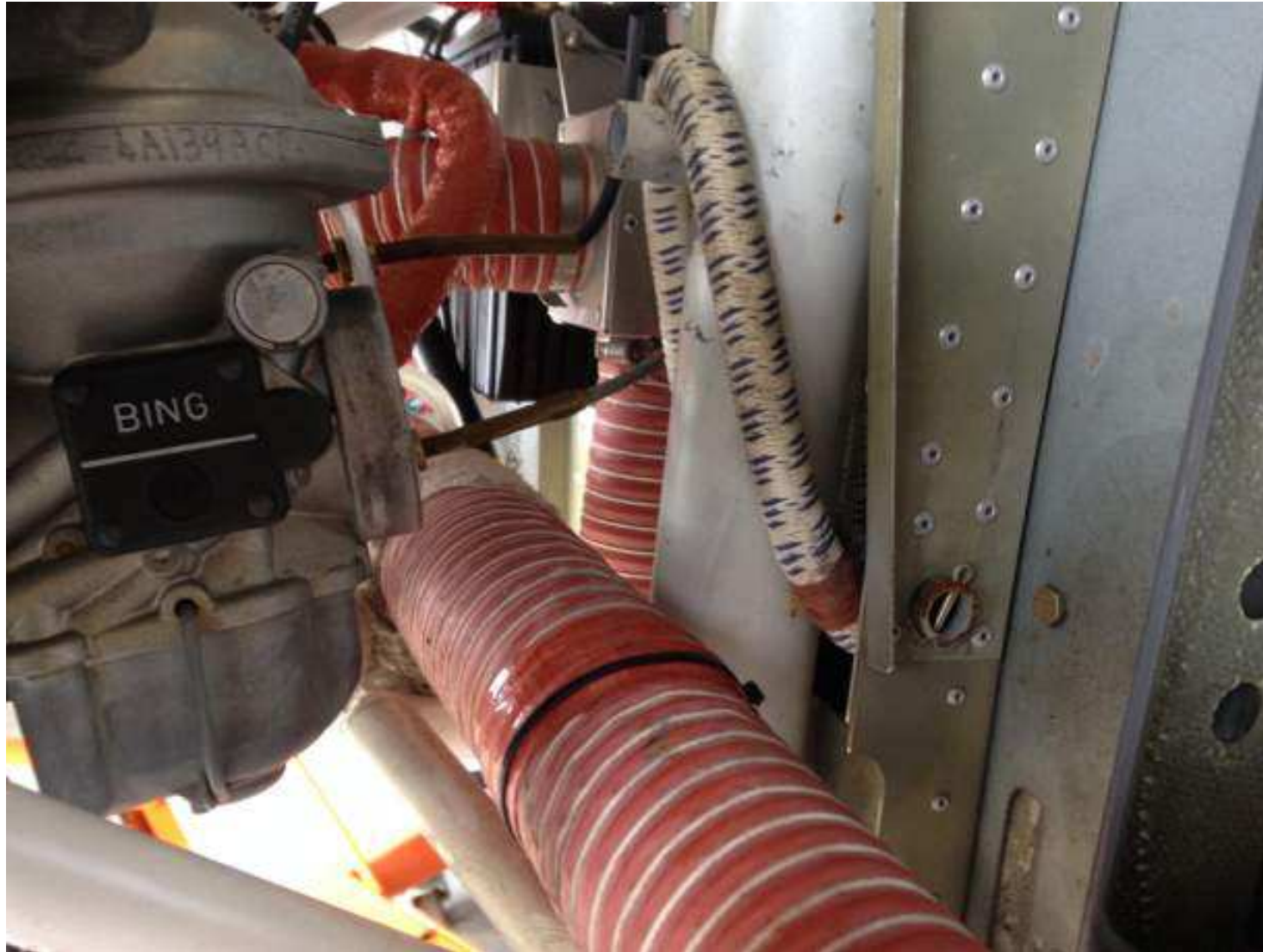
Put a cargo ratchet strap from the engine hoist to the bungee

601XL Front Bungee Replacement



Ratchet the bungee up until it snaps over the support tube

601XL Front Bungee Replacement



New bungee in place. Took just under 2 hours to complete