

# Nose gear bungee break on 601XL-B N554SG

- Bungee installed March, 2014.
- Bought new through Zenith, had recent manufacture date on part packaging.
- The break occurred either during a grass field landing or subsequent take-off. Due to grass conditions, it was not obvious if the bungee broke on landing other than I recall a slight nose down attitude during taxi-out for takeoff
- Bungee break became obvious when there was noticed a lack of rudder friction from the nose gear v-block after take-off
- Subsequent landing on hard surface was uneventful, but was accomplished power-off do minimize prop/engine damage had it been worse than just a broken bungee
- Welded ring on nose gear strut did it's job. Measured 7.5 inches of prop clearance with broken bungee compared to 11 inches with intact bungee.

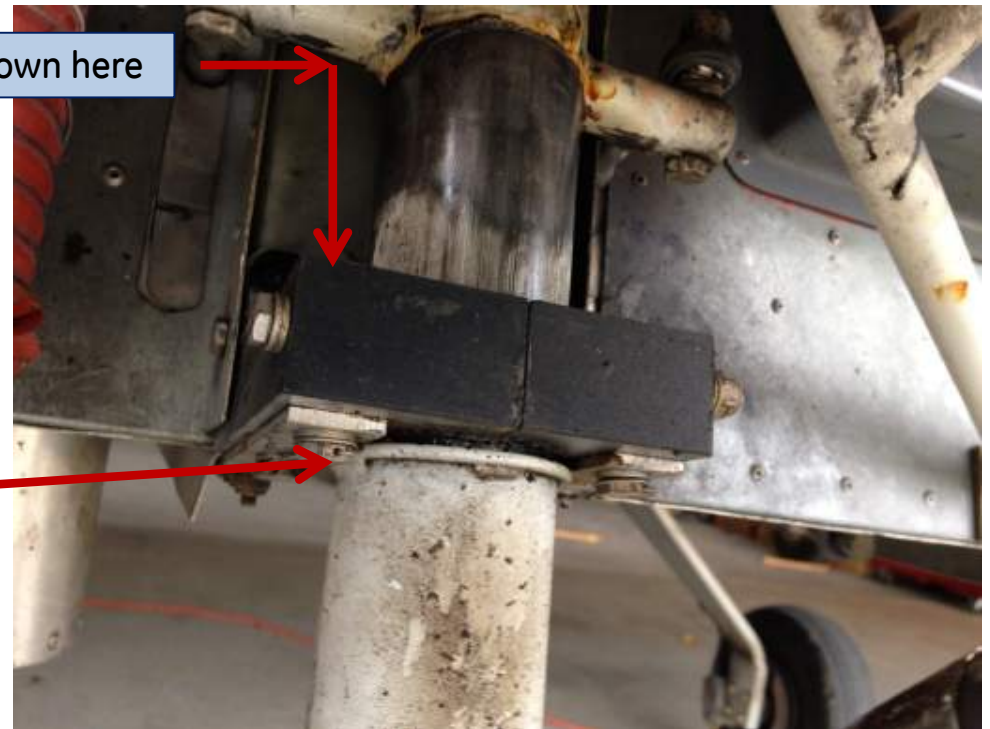
# Nose gear bungee break on 601XL-B N554SG



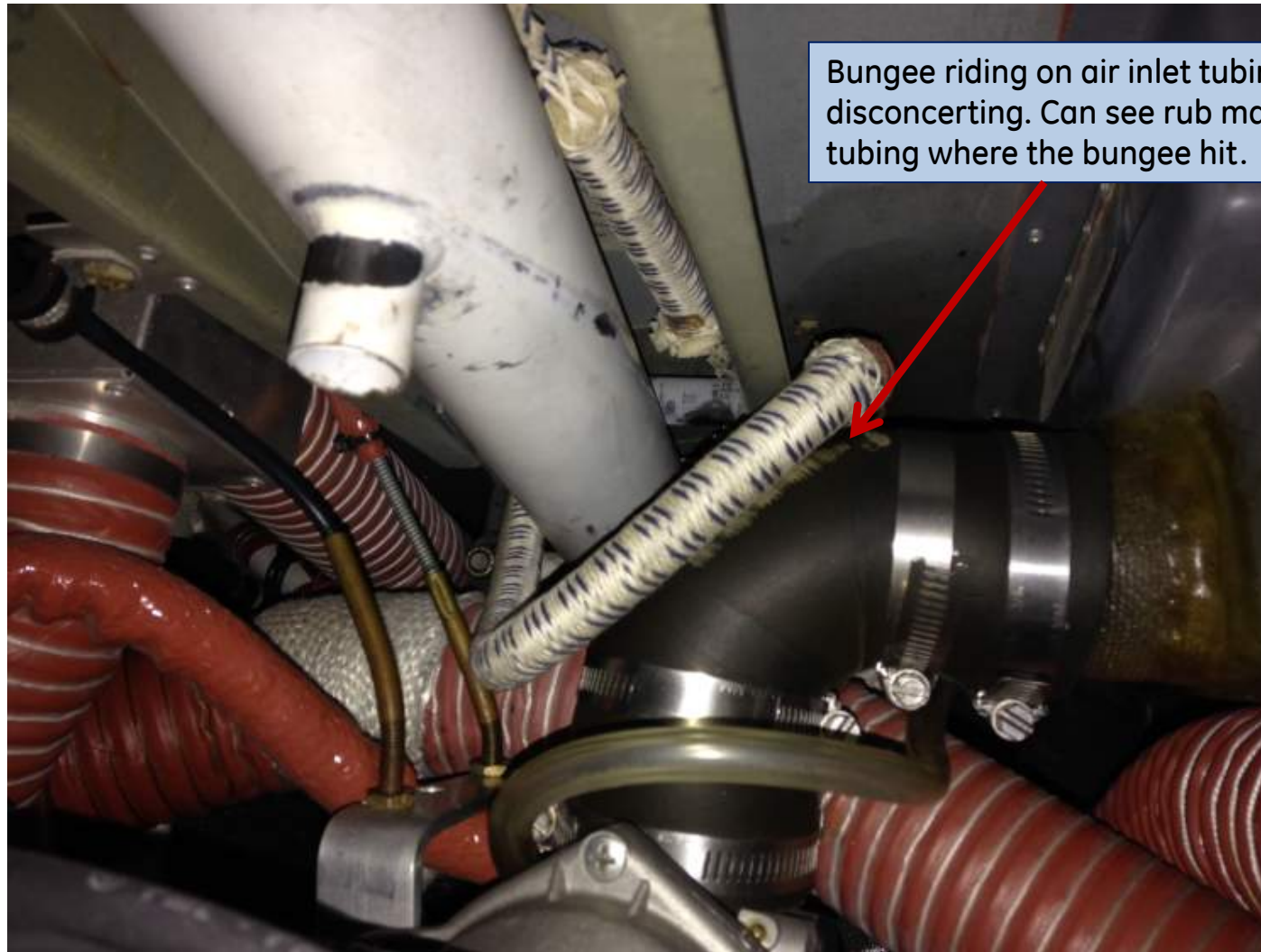
Slight nose down attitude noted, lose about 3.5" of strut length with broken bungee

This should be down here

Picture shows the welded ring sitting against Lower Bearing Support. Inspection found no cracks or distortion.



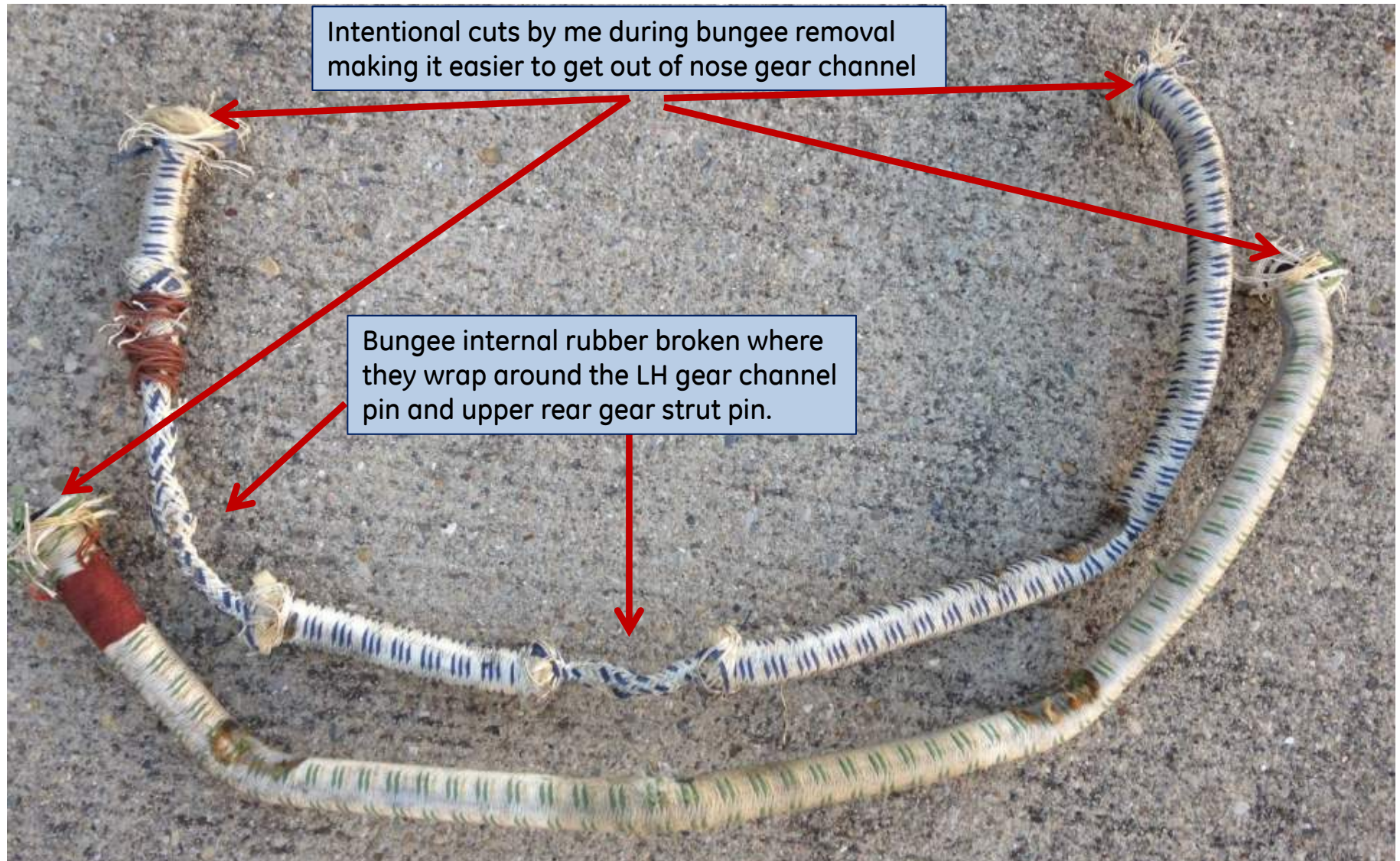
# Nose gear bungee break on 601XL-B N554SG



Upon upper cowl removal, found bungee rubber broke in two places (outer fabric cover still intact). Front bungee had popped off the support tube and was resting on carb inlet tubing.



# Nose gear bungee break on 601XL-B N554SG



Bottom bungee was original from 2006 kit that was removed in March, 2014 due to preventative age concern. Bungee was still functional at time of removal. Top bungee was installed new at this time and had a fairly recent (within past 6 months) manufacture date with it.



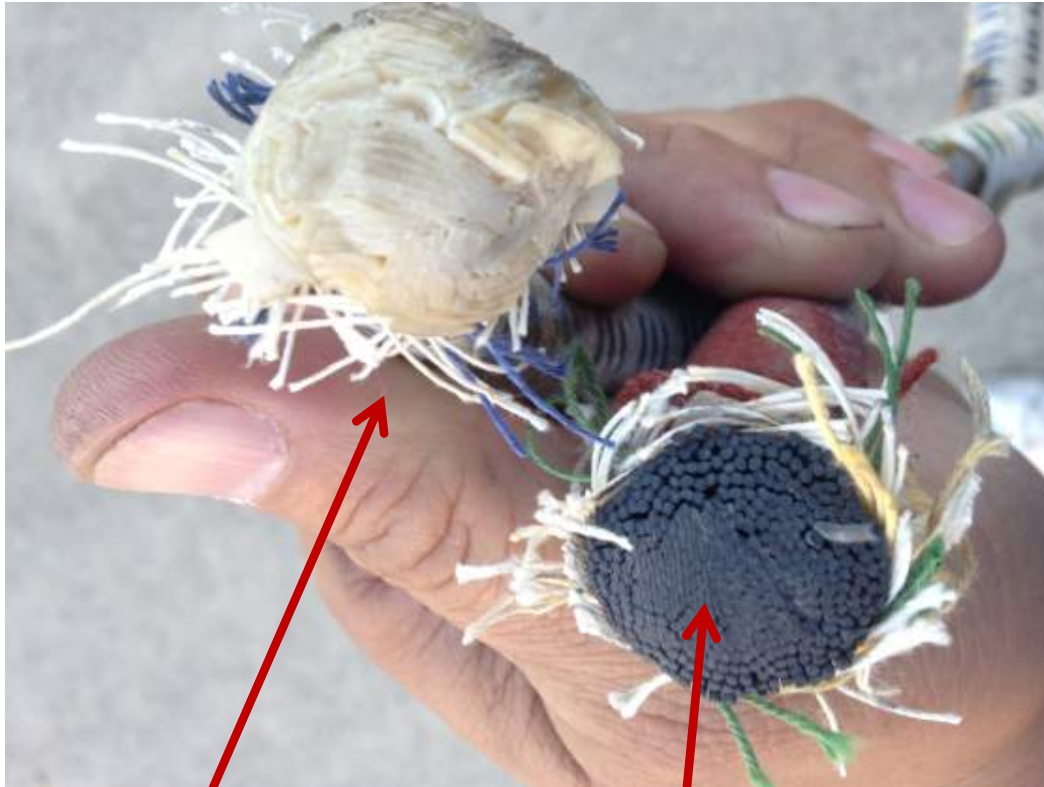
# Nose gear bungee break on 601XL-B N554SG

Cloth covering still intact with no signs of hard rubbing or chemical contamination

Superficial contact marks on old bungee where it wrapped around gear pins



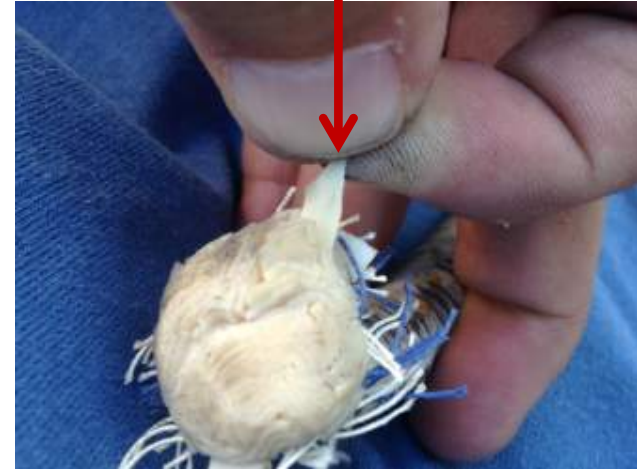
# Nose gear bungee break on 601XL-B N554SG



2014 dated bungee compared to 2006 bungee shows a change in rubber band configuration

These bungee ends are part of the insertional cuts to facilitate removal

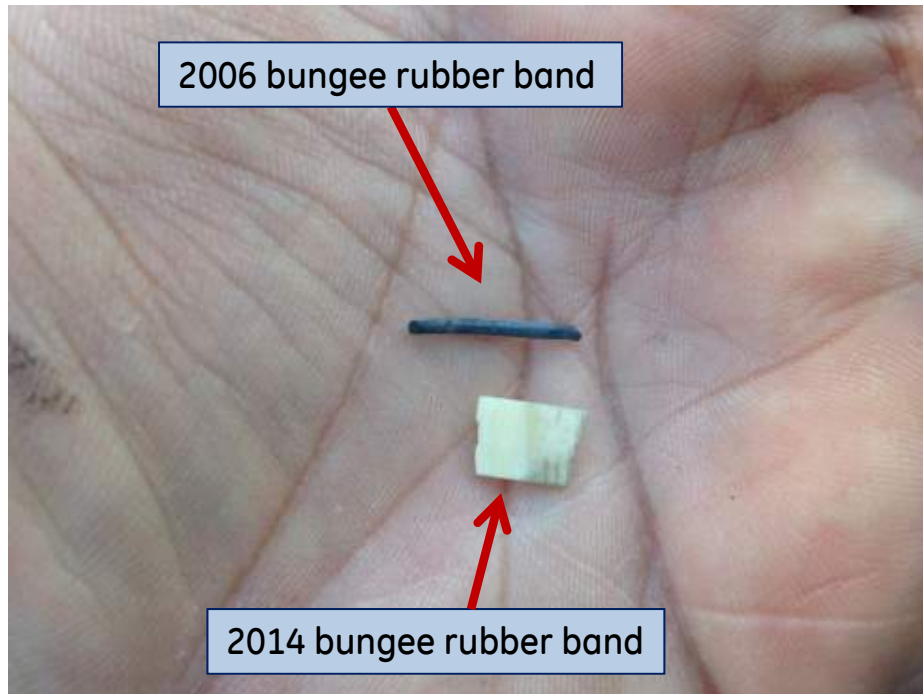
2014 bungee made up of wider, flat bands



2006 bungee made up of small, round strands



# Nose gear bungee break on 601XL-B N554SG



All 2006 bungee bands I could pull on were quite strong. Some 2014 bungee bands were also quite strong, while others were brittle and broke easily.