

AeroMomentum AM15 + Zenith CH 650 / 750 FWF Components FOR SALE

We mounted the engine on our Zenith CH750 but never started it.

It comes with all the firewall components provided by AeroMomentum. Certain smaller components, like fasteners, have yet to be procured or fabricated by the builder. Please review the following pages for details.

Delivery Timeline

- Engine April 2018
- Cowling January 2020
- Engine Mount and other firewall forward components arrived in several shipments between 2018 and January 2021
- Two 'nostrils' are supposed to be installed on either side of the cowling, as air intakes and to provide clearance, but haven't been delivered yet

We are selling it as we want to get the Zenith done and don't have the time to make the engine installation work.

To speed things up, we therefore ordered a Rotax 912 ULS + Zenith FWF kit.

Price: \$10,500

Location: Novi, MI 48375
Contact: Oliver Reik
Phone: (248)310-5860
E-Mail: oliver.reik@gmail.com

I would prefer if the buyer would pick everything up locally.



The engine has been upgraded to the new style plenum and the low profile air intake tubes.



Despite of the new air intake tubes, the top of the engine is still higher than the front of the glareshield.

There was no way to mount the engine mount lower. The buyer will therefore either have to modify the mount and / or modify the cowling to make space for the engine.

The engine bolts, that were provided by AeroMomentum, are too long and need to be replaced.

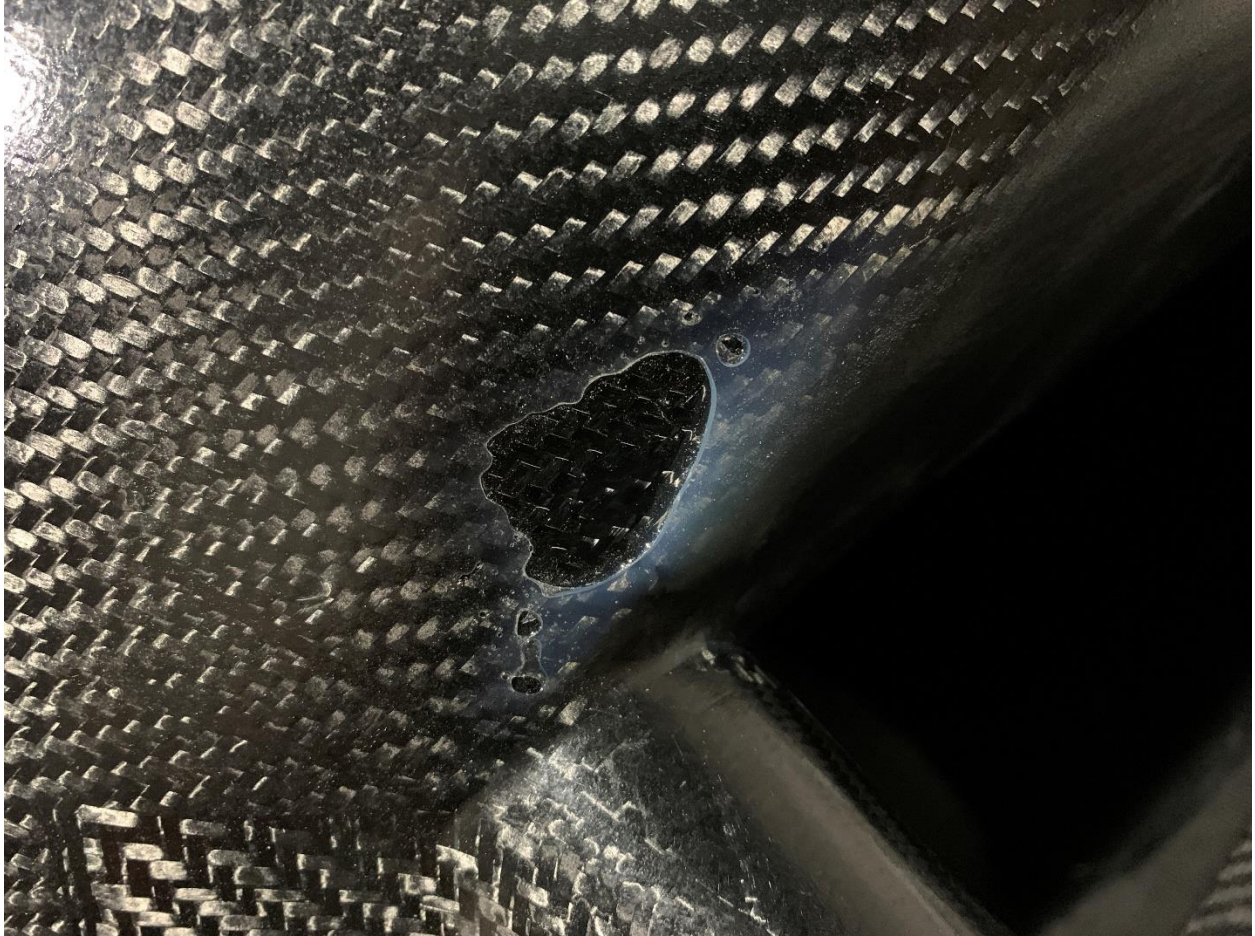


We also experienced collisions between the fuel rail and the cam angle sensor housing. After talking to Mark at AeroMomentum, we cut openings in the cowling to let these components protrude through the cowling. We were planning to fiberglass 'bubbles' into the cowling in these areas.

Only after the holes had been cut, we learned (also no mention of it in the instructions) that a 3" propeller spacer needs to be installed, what moved the cowling 3" forward. Still, though, the fuel rail collides with the cowling.

The forward opening for the cam angle sensor therefore has to be closed again.





The cowl is overall nicely made, towards its front and next to the radiator air intake, the cloth however wasn't properly laid into the mold, what led to an accumulation of resin in these areas.

Note, the cowl doesn't come with installation hardware.

Since there was no mention of the 3" prop spacer, which we also just received in January 2021, the cowl is now borderline short, as we learned about this only after we had it rough trimmed. **The buyer will therefore likely have to extend the rear of the cowl.** We still have the cut-off section of the upper half, though, what should make extending this part of the cowl fairly easy.



The shape of the cowling doesn't even remotely match the fuselage. According to Mark from AeroMomentum it can however be forced into position with fasteners.



The exhaust tube has yet to be trimmed and TIG welded. When we ordered the 'kit', Mark from AeroMomentum promised to weld it up, once we have it trimmed and marked. Since a support for the muffler also still needs to be designed / fabricated, we were however planning to have it welded locally.



Exhaust components. The oxygen sensor is brand new, we received it in January 2021



Fuel components



Cooling components and cabin heater



Miscellaneous components



Spinner, back plate, prop spacer, prop hub and prop blades



The prop is a NR propeller (also sold as Luga or Kool) SL-106: <http://www.nrprop.com/r106a.html#>